

AI Smart Camera Instruction Manual



HiEasy

I. Download and Install the APP

1. Quickly download and install by scanning the QR code.



HiEasy APP

2. Search for "HiEasy" in the mobile app store to download and install.



II. Account Registration and Login

- 1、 Open the APP, click "Register with Mobile/Email" and follow the prompts to register an account. Mobile numbers and emails can both be used for registration.
- 2、 For existing accounts, directly enter the account and password to log in.

The image displays three sequential mobile app screens for account management.

Screen 1: Login

- Header: Login
- Country selector: 中国 +86 >
- Input field: Enter a phone number or email address
- Input field: Enter your password
- Link: Forgot Password?
- Button: Login
- Links: Verification Code Login | New User Registration
- Footer: Log in with a third-party account (WeChat, Snapchat, Apple icons)

Screen 2: Sign-up

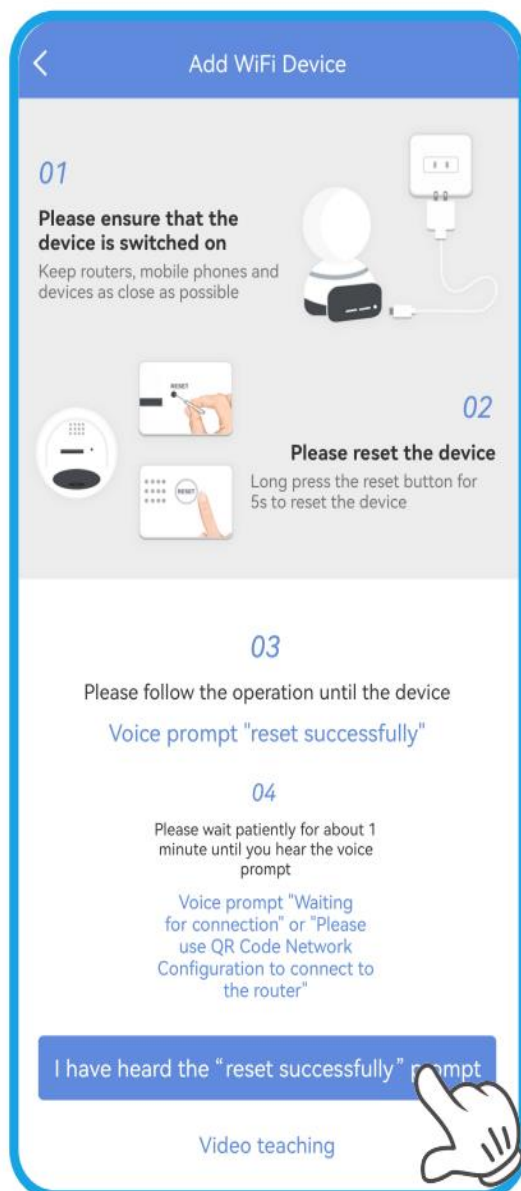
- Header: Sign-up
- Header: Welcmoe to HiEasy
- Country selector: 中国 +86 >
- Input field: Enter a phone number or email address
- Text: After successfully registering an account, the country/region cannot be modified
- Checkbox: ☐ I have read and agreed to the "User Agreement" and "Privacy Policy"
- Button: Next
- Button: One-click registration

Screen 3: Sign-up

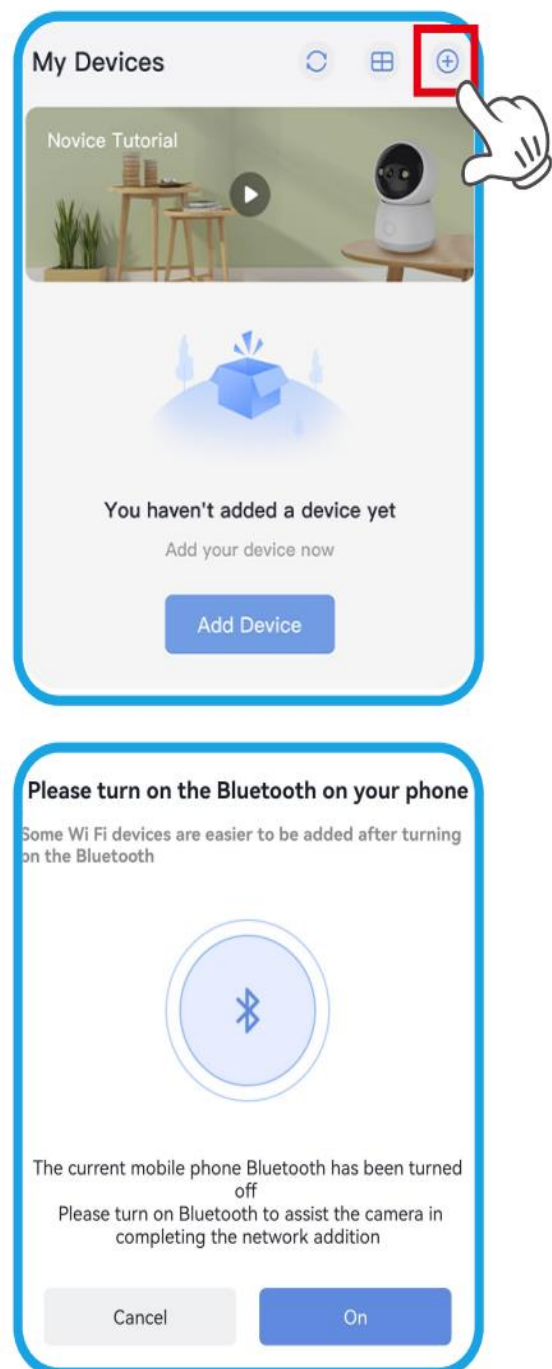
- Header: Sign-up
- Phone number: 1767***2090
- Input field: Please enter the gr... (with a 4-digit code 4336 and a refresh icon)
- Input field: Enter verification code [Get the verification code](#)
- Input field: Enter your password
- Input field: Enter your password again
- Description: The password contains 8-16 characters, including alphabetic and numeric characters
- Button: Sign-up
- Text: No verification code is received?

III. WiFi Camera Connection Methods★

Before adding a WiFi camera, ensure that your mobile phone is connected to WiFi and Bluetooth is turned on. Place the camera close to the router and power it on.

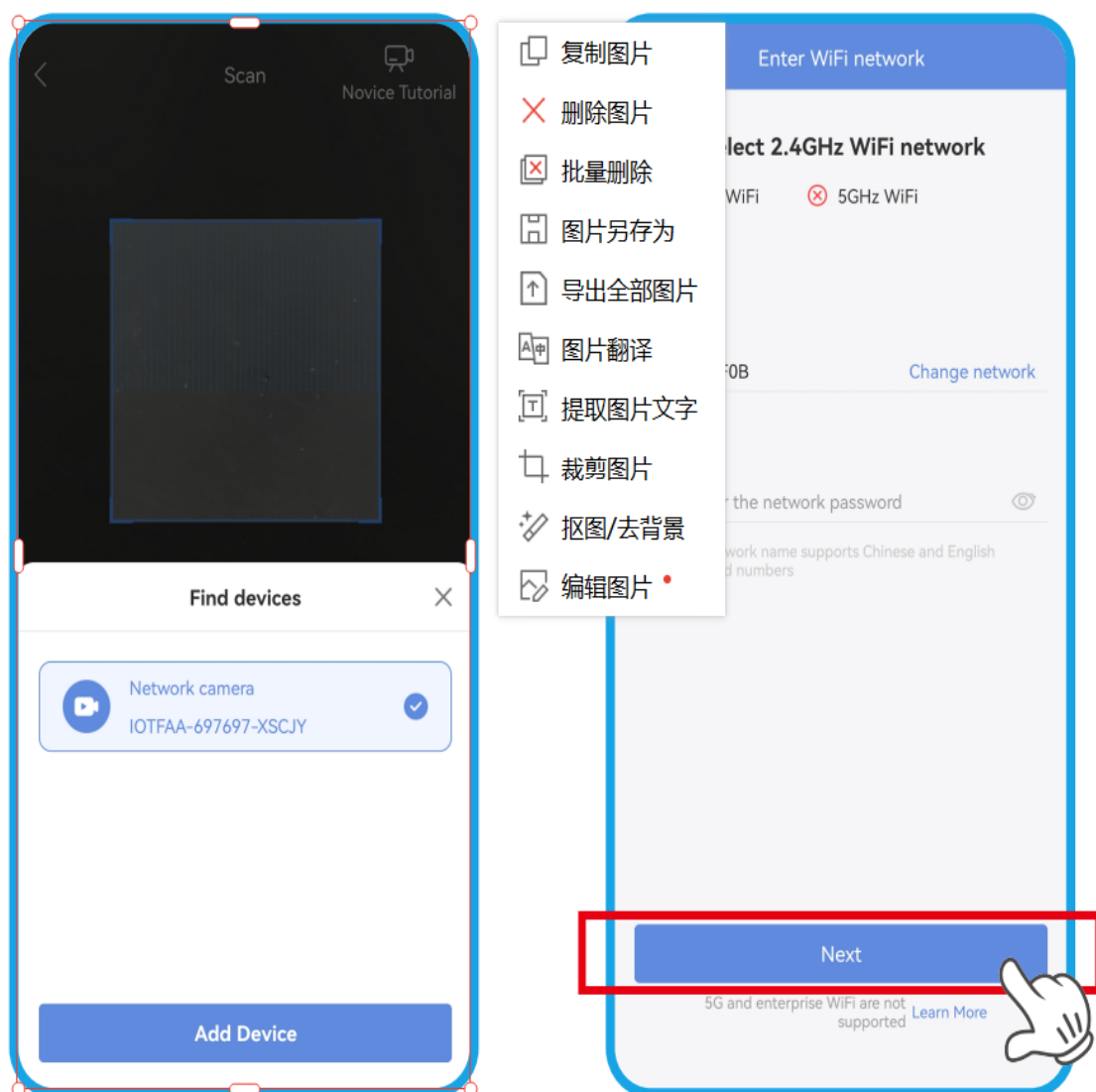


Preparations before addition

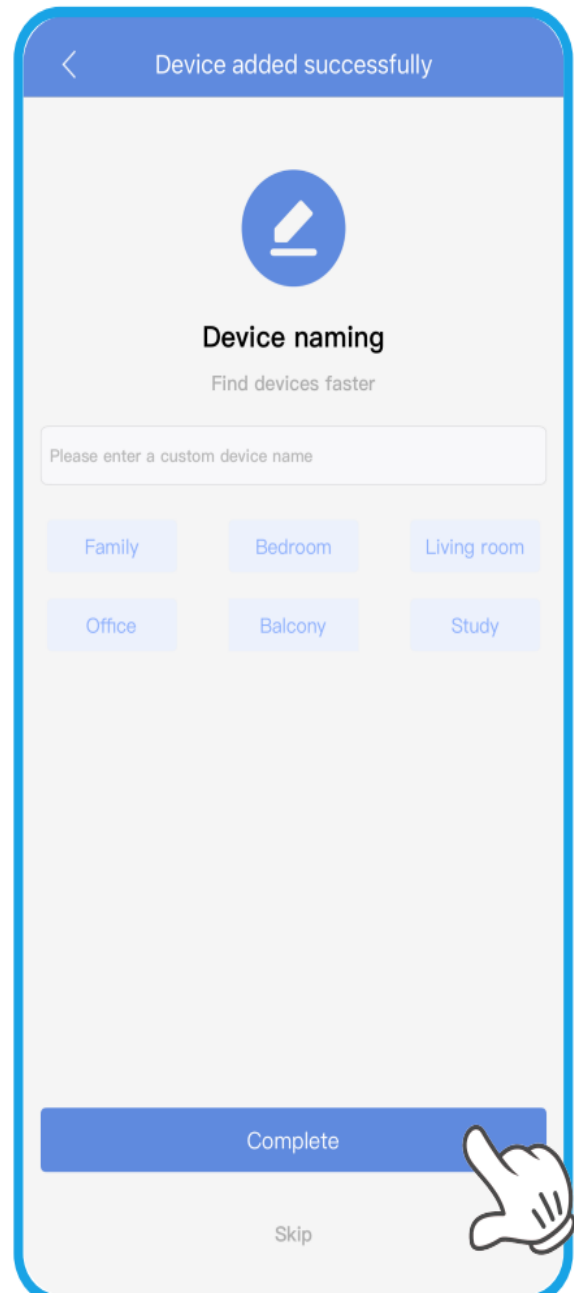
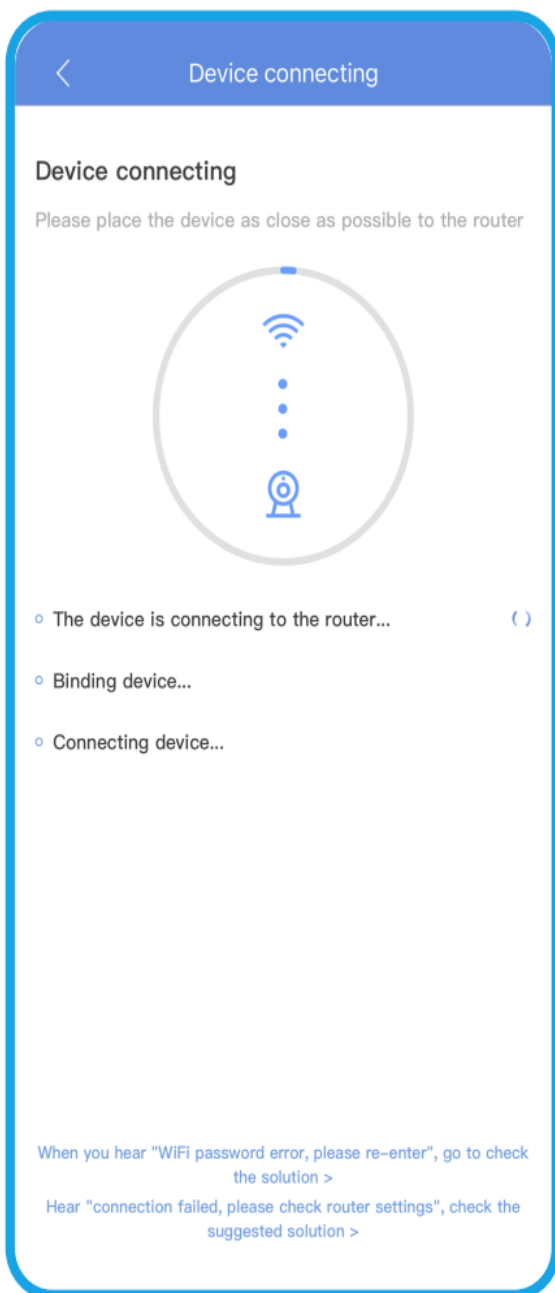


Bluetooth Pairing:

- 1、 After the camera powers on and you hear the broadcast "Waiting to be added", open the APP and start adding the camera. If you hear an error broadcast, press and hold the reset button for 5 seconds to restart the camera.
- 2、 Enter the WiFi password as prompted and wait. When the camera broadcasts "Device added successfully", the addition is complete. This process takes 60 - 120 seconds.

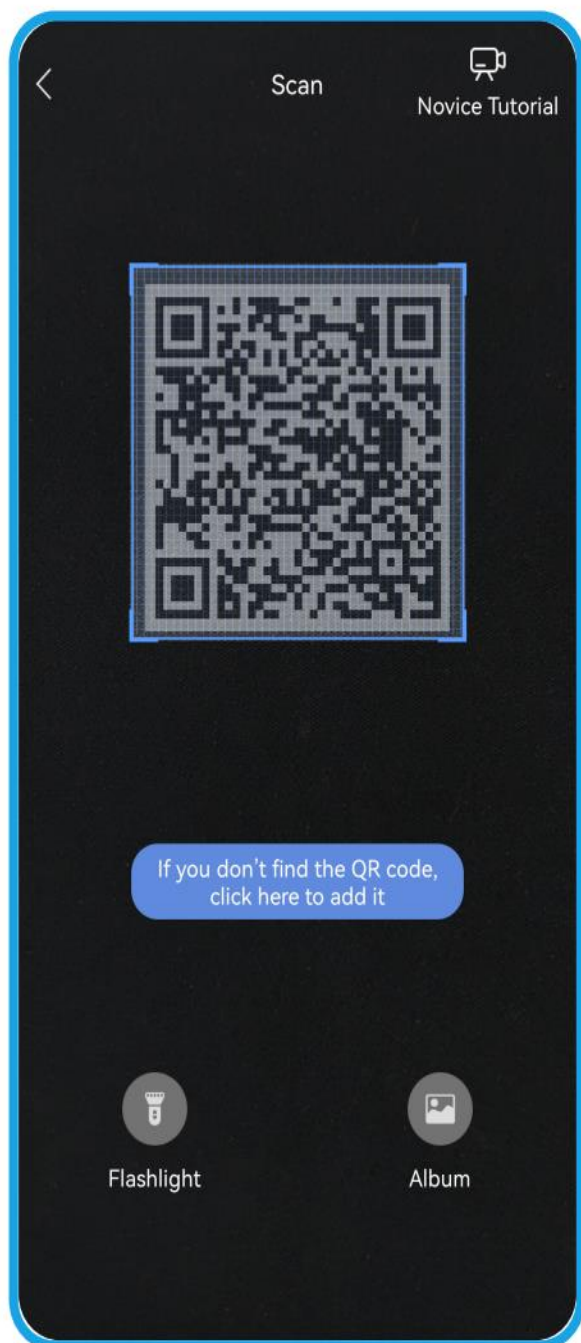


3、 After successful addition, set the camera name and click to complete. You can then view the added camera on the home page.

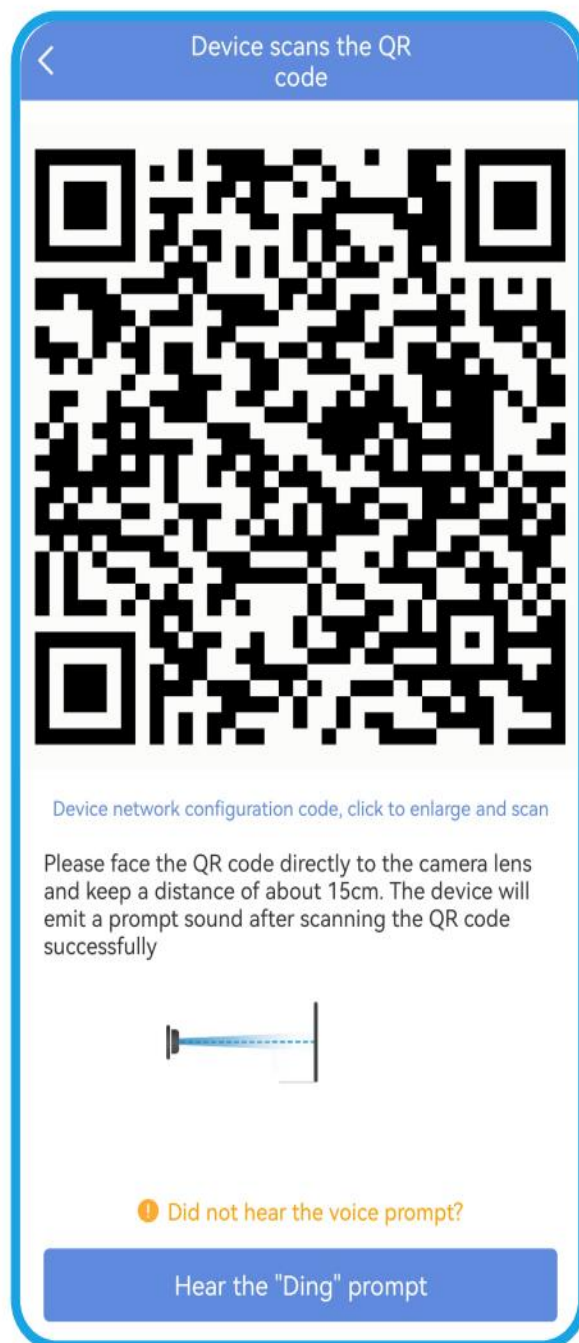


QR Code Pairing:

Open the APP and scan the QR code on the camera as prompted.



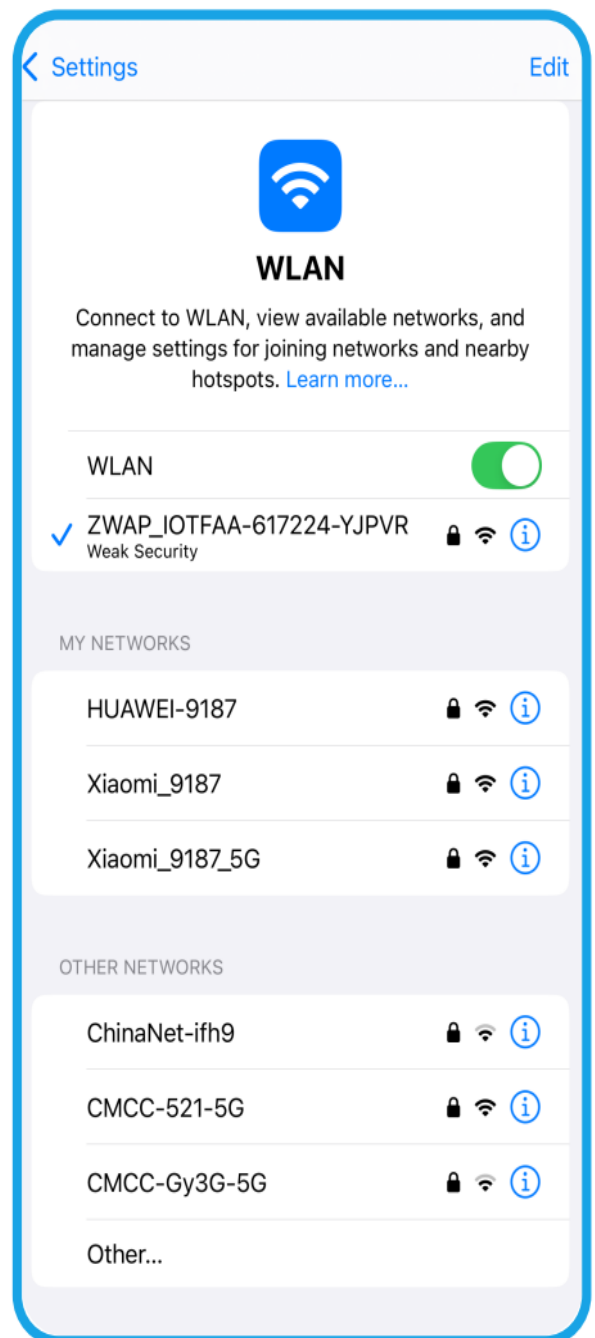
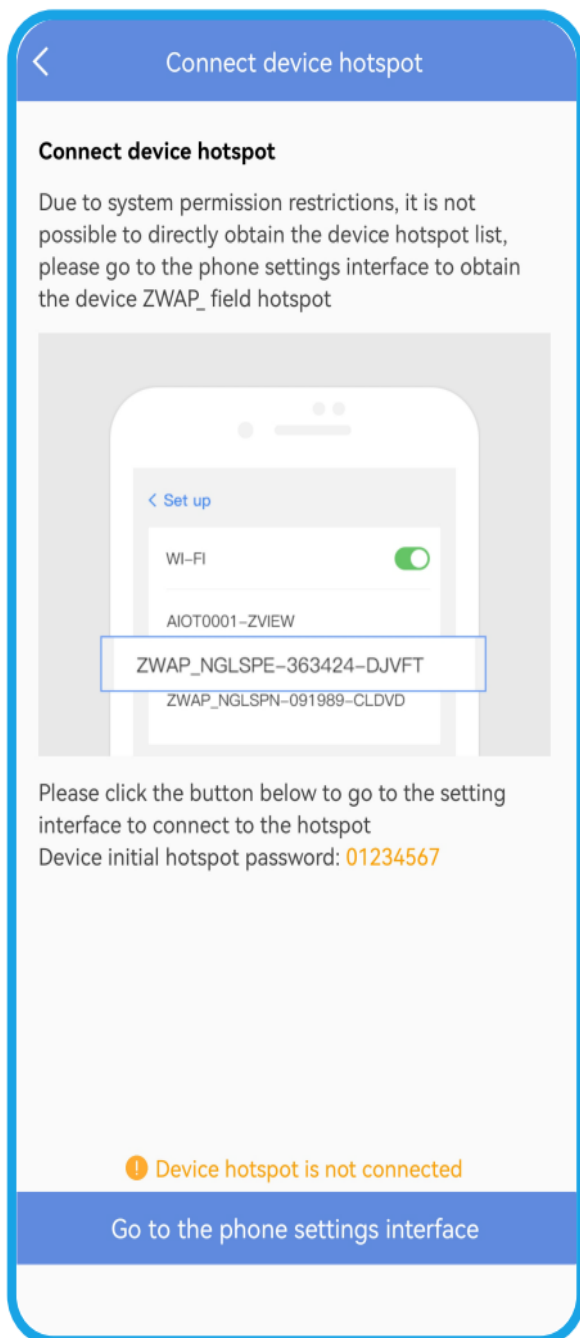
Scan the QR code on the camera with your mobile phone



Use your mobile phone to scan the QR code generated by the camera.

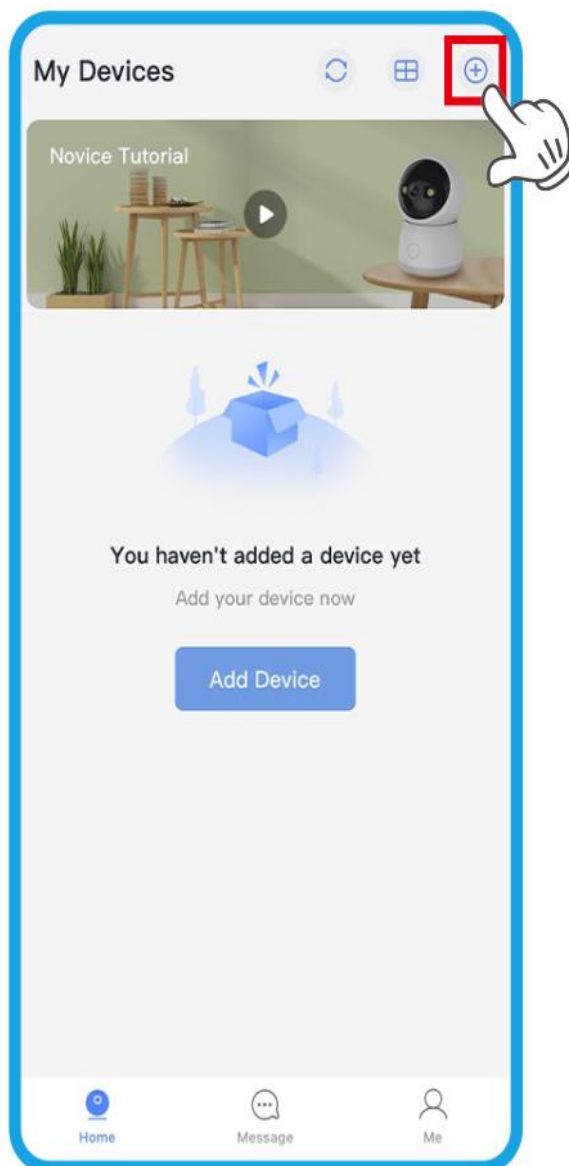
AP Hotspot Pairing:

- 1、 Open the APP and select AP hotspot pairing as prompted.
- 2、 Connect to the hotspot directly from your mobile phone for local area network viewing., Hotspot password: 01234567。

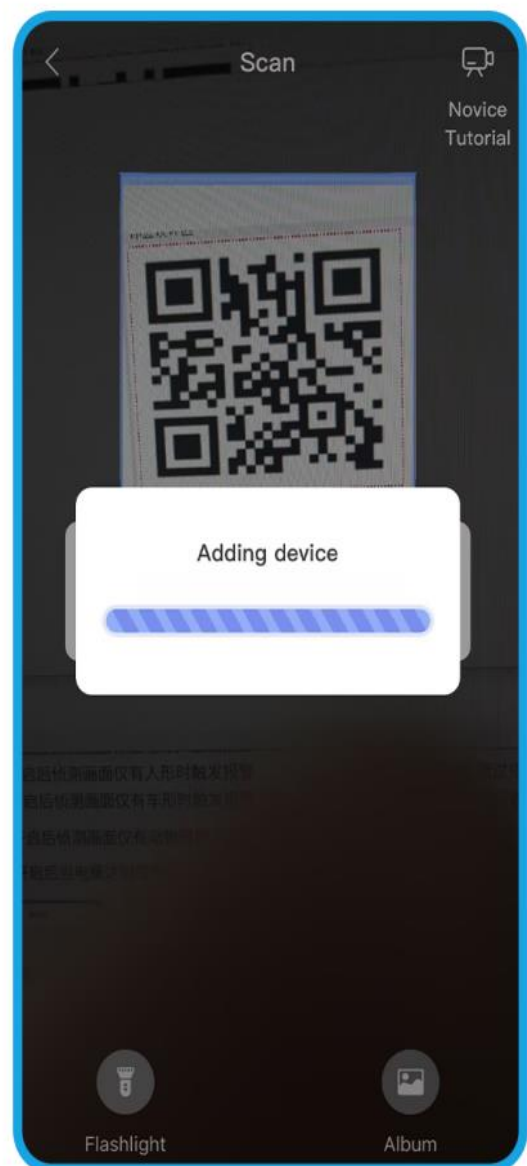


IV. 4G Camera Connection Method★

After the camera powers on and you hear the voice broadcast "Network connection successful", open the APP and scan the QR code on the camera body to add it. If there is no voice broadcast prompt, press and hold the reset button for 5 seconds and wait for the camera to restart before operating.



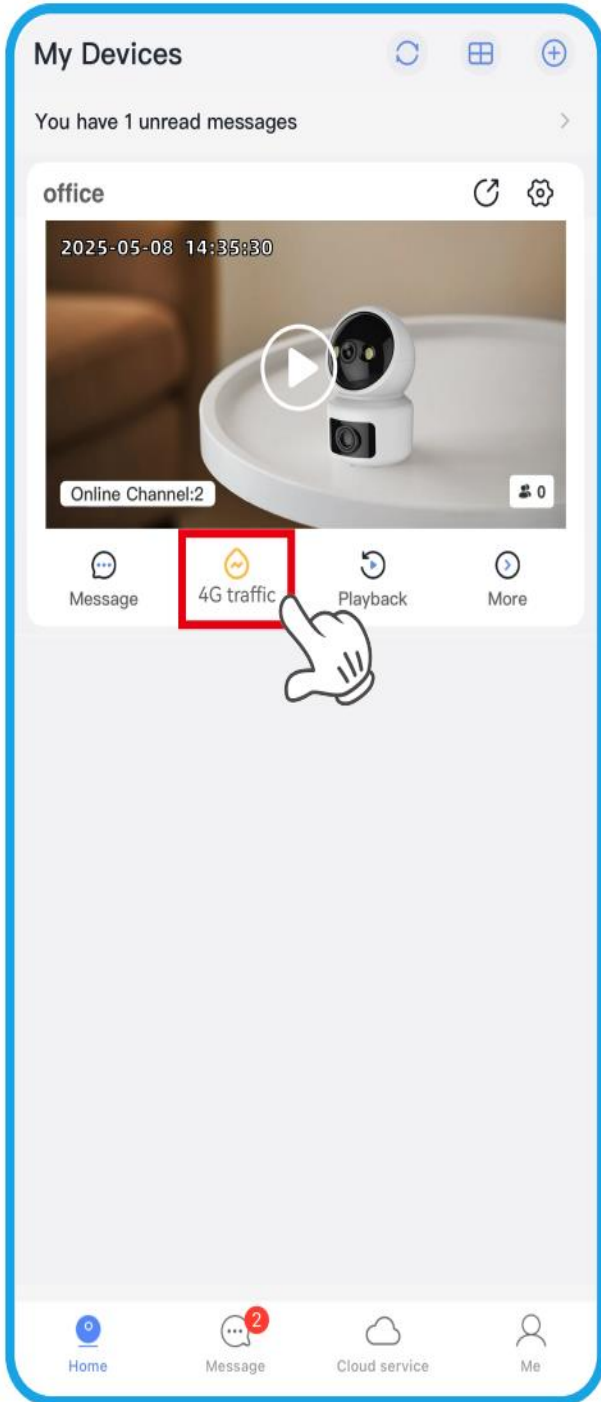
Click the "+" or scan the blue prompt bar in the middle of the interface



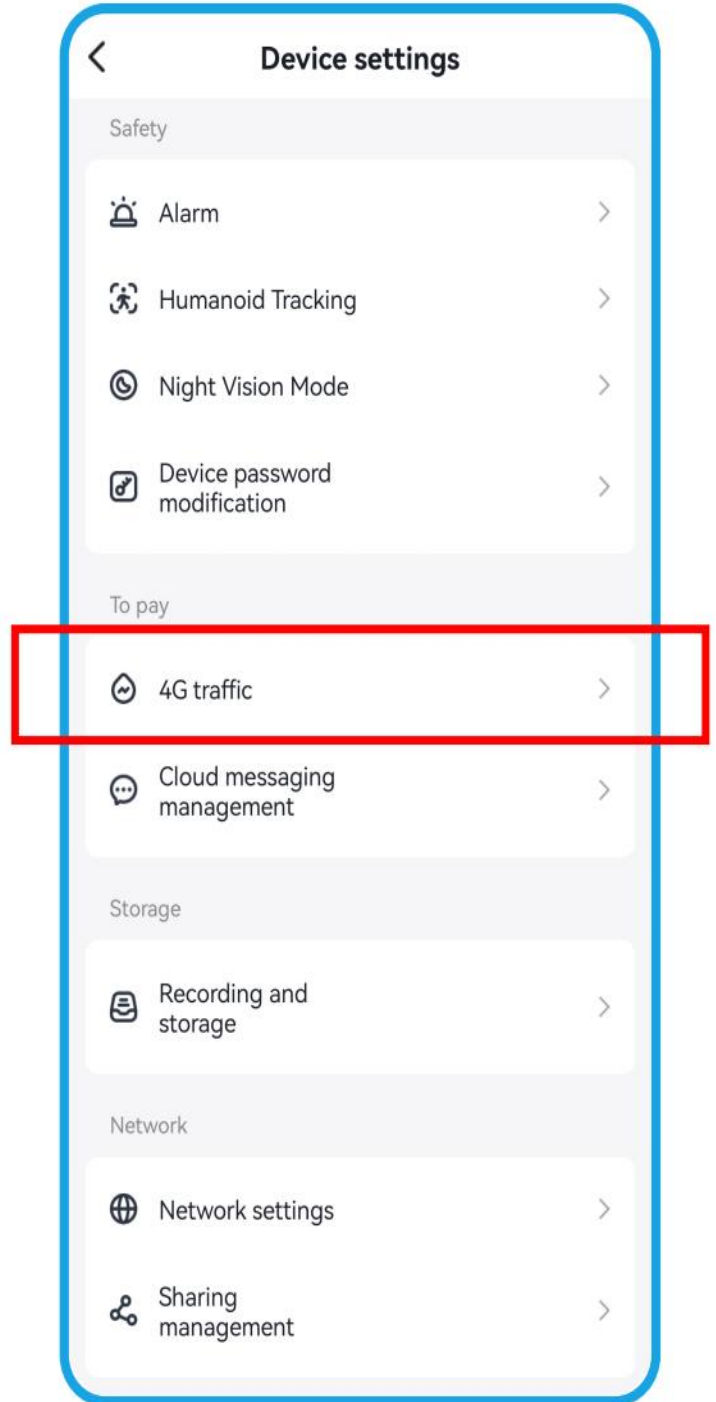
Scan the QR code on the camera with your mobile phone



V. 4G Data Purchase

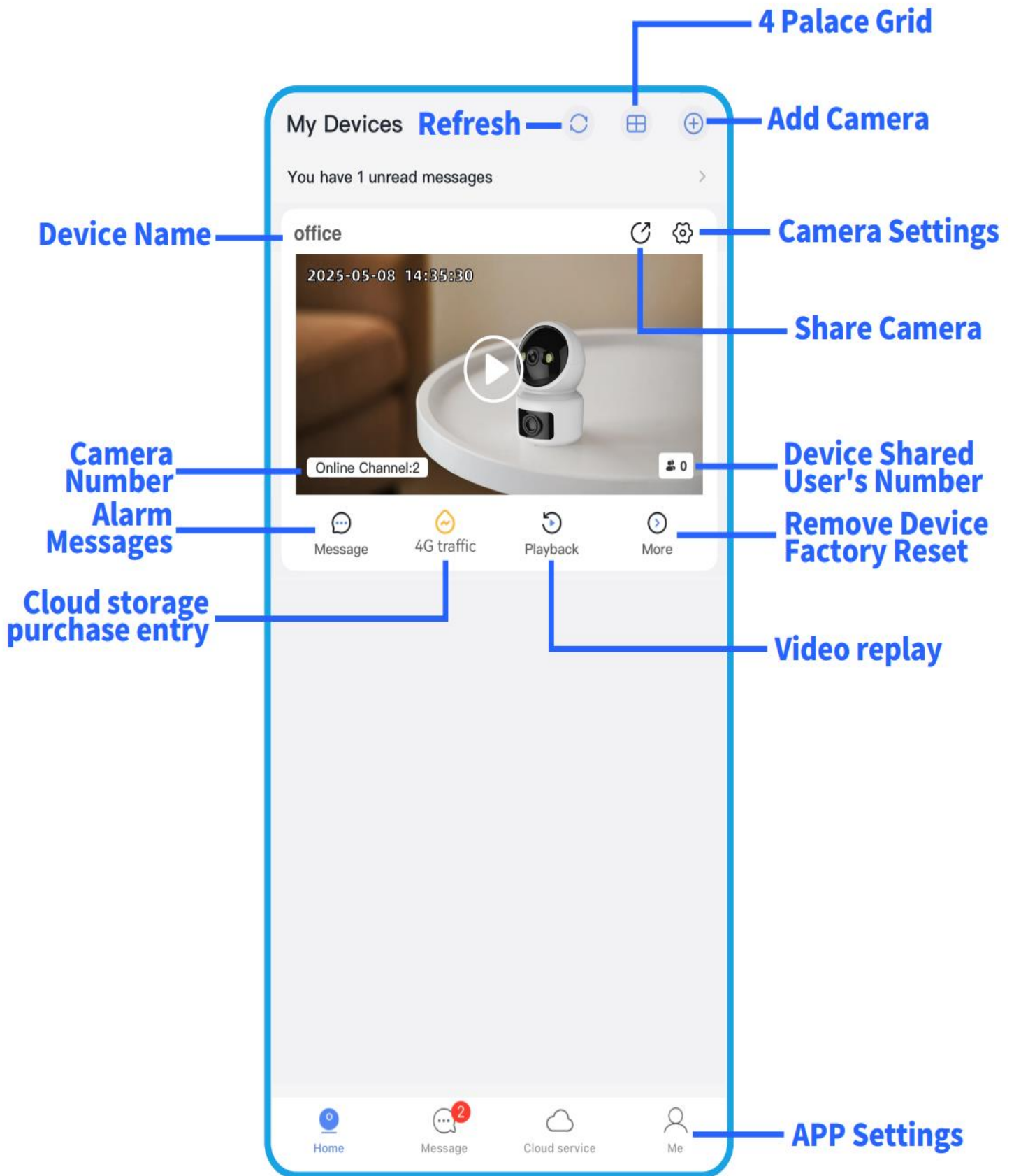


Home Page ➔ 4G Traffic Management

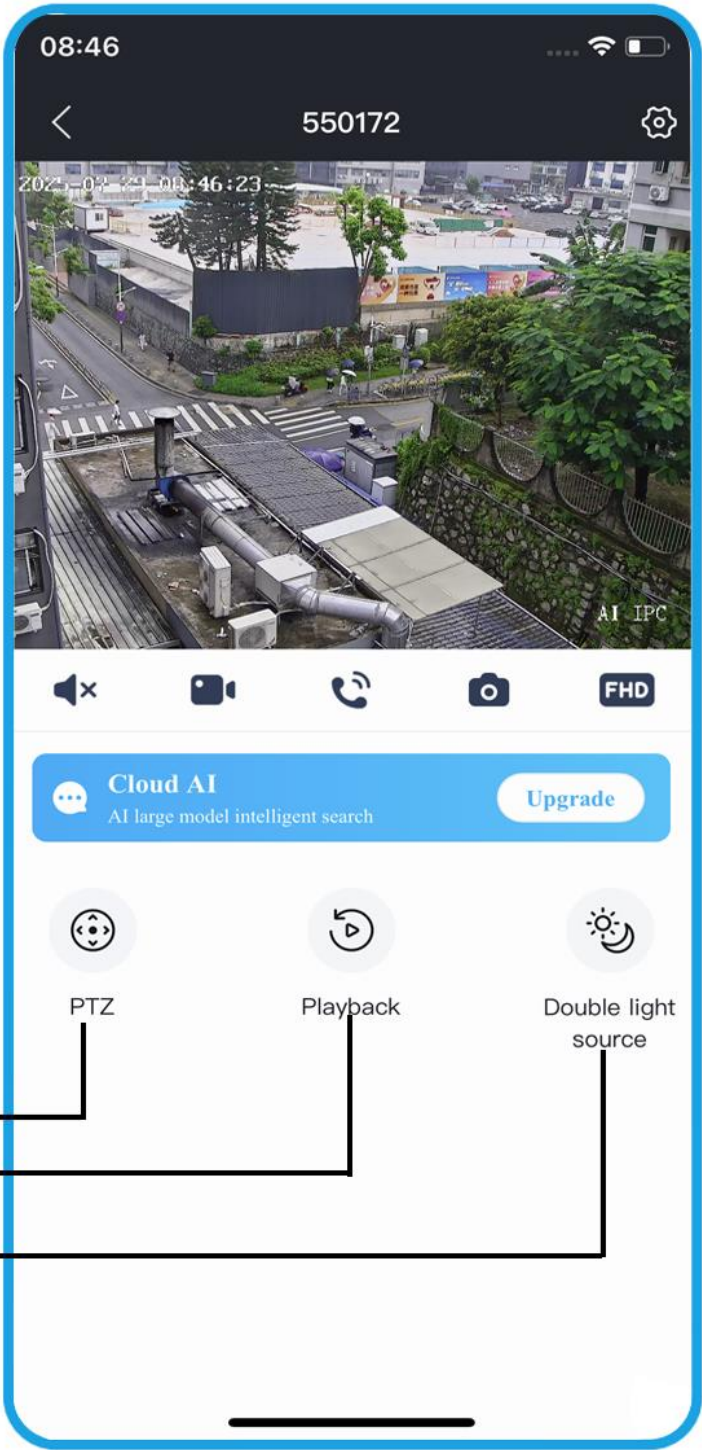


Home Page ➔ Device Setting
➔ 4G Traffic Management

VI. Home Page

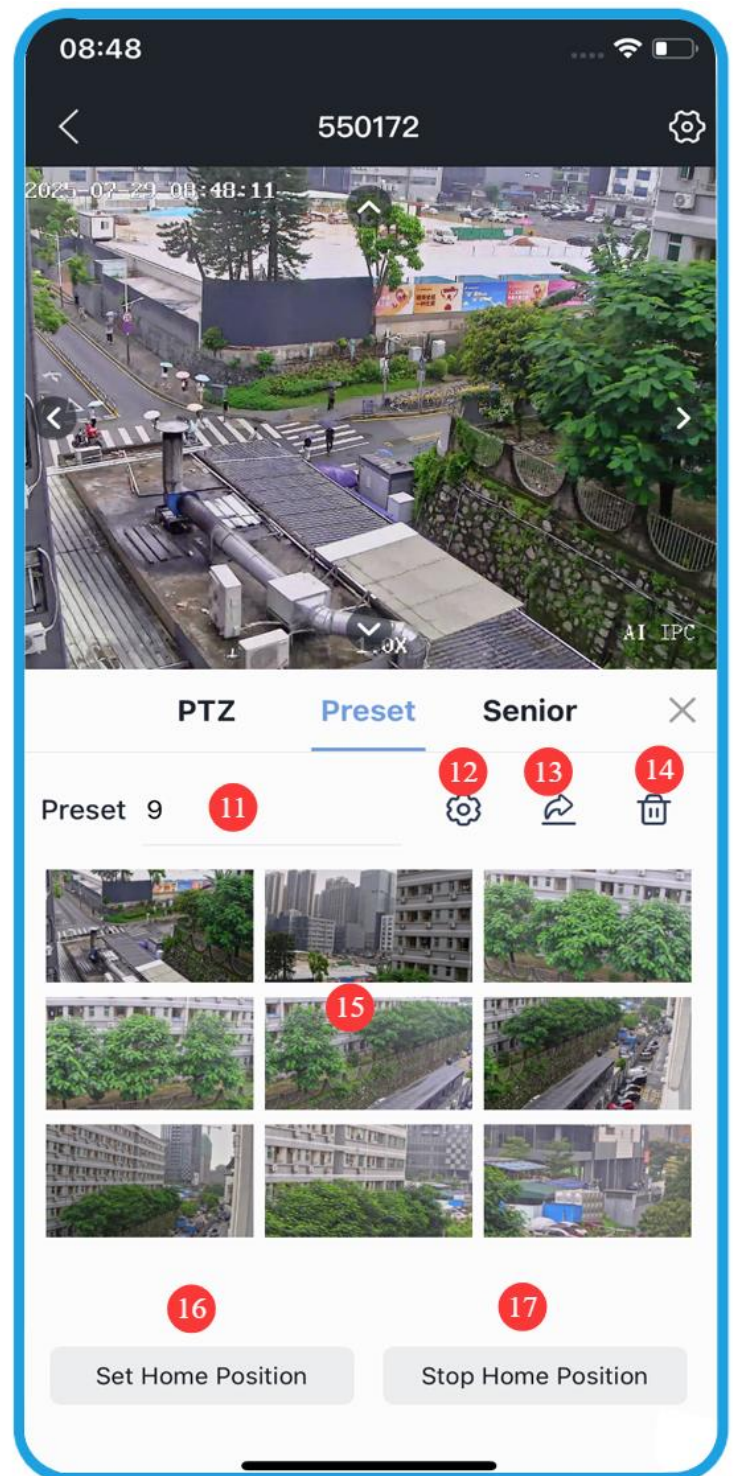
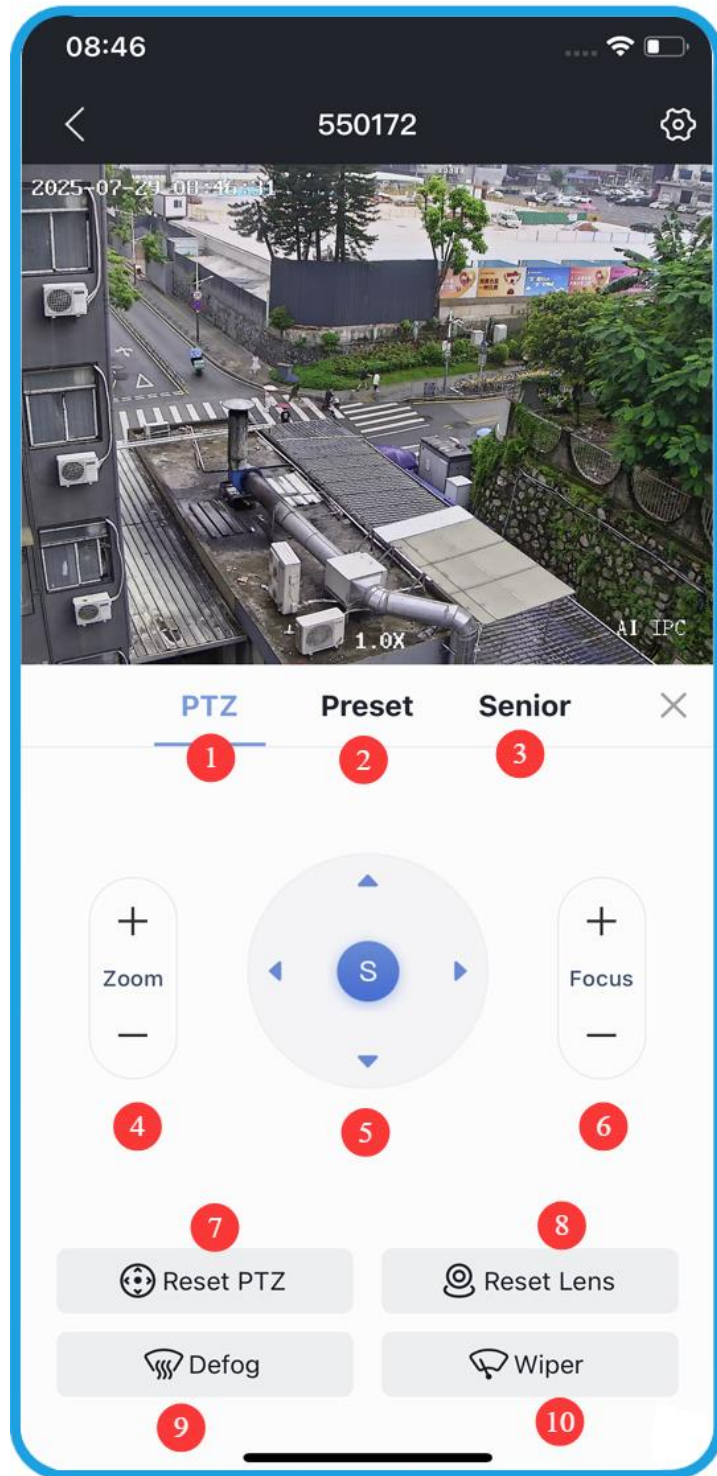


VI-1: Home Page for PTZ

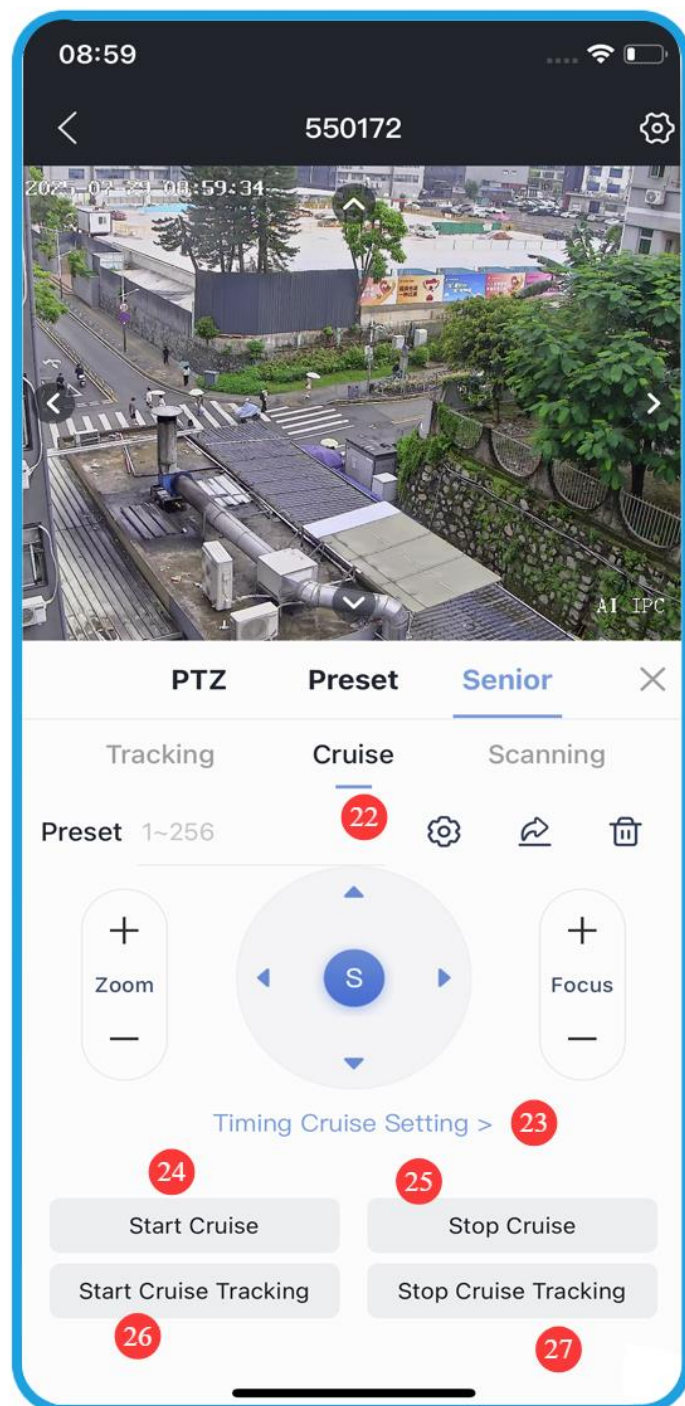
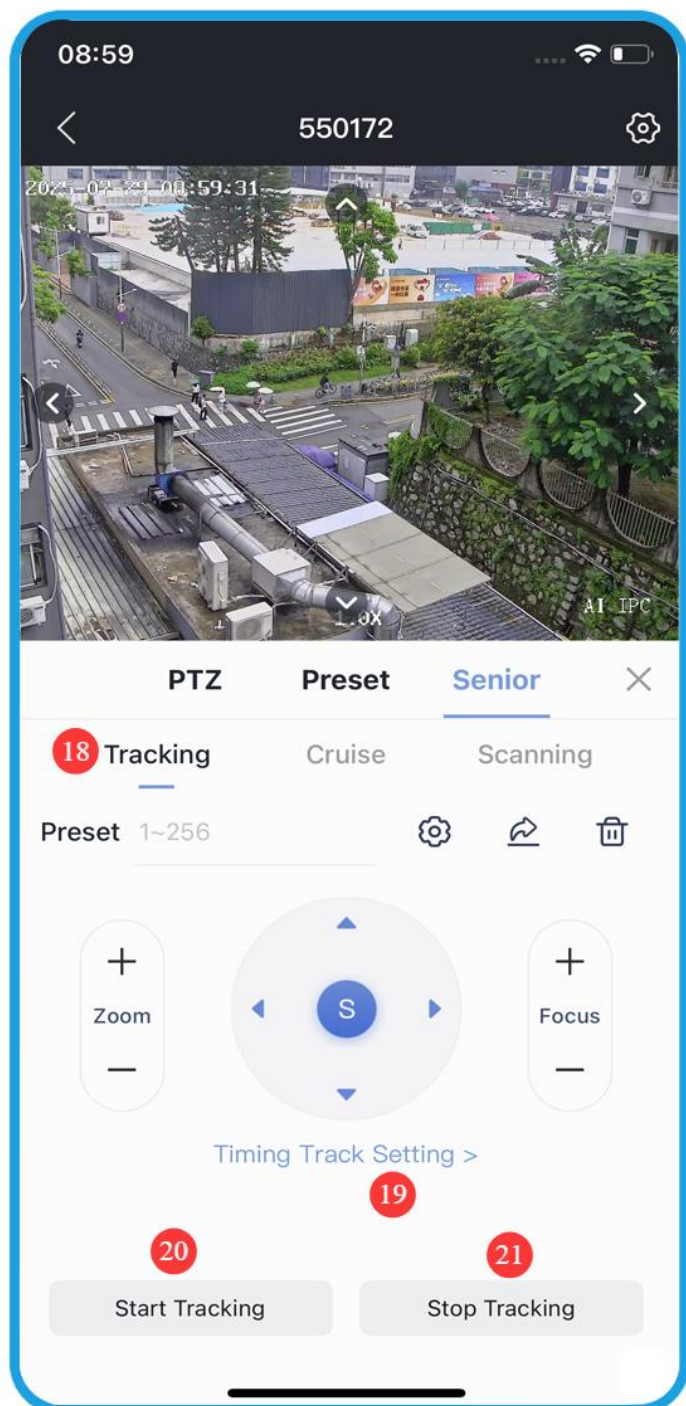


PTZ Control UI
Record playback
Light switch

VI-2, PTZ camera operation interface instructions:



- 1: Enter PTZ control interface; 2: Enter preset position operation interface;
- 3: PTZ advanced function setting interface; 4: ZOOM+/-; 5: Pan/Tilt control; 6: Focus+/-;
- 7: Reset PTZ; 8: Reset lens;
- 9: Enable internal defogging function of camera(The camera needs to support this function);
- 10: Enable wiper function(The camera needs to support this function);
- 11: Preset position input field; 12: Set preset; 13: Call preset; 14: Delete preset position;
- 15: Display thumbnails of 1-9 preset positions;
- 16: Setting and turn on home position;
- 17: Turn off home position



18: Enter the tracking control interface;

19: Set the tracking time;

20: Start tracking;

21: Stop tracking;

22: Enter the cruise control interface;

23: Set the automatic cruise time period;

24: Start cruise;

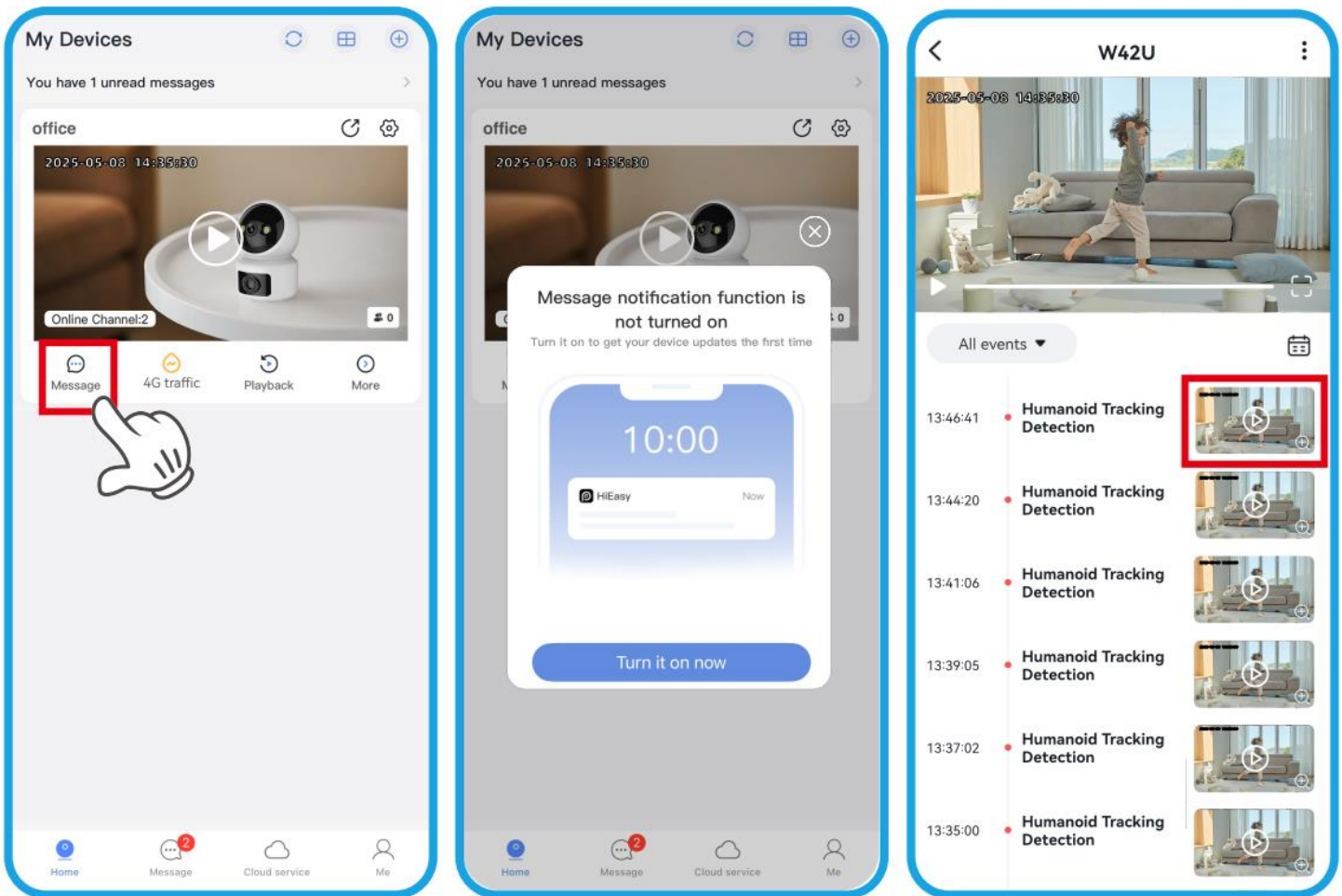
25: Stop cruise;

26: Start cruise tracking;

27: Close cruise tracking

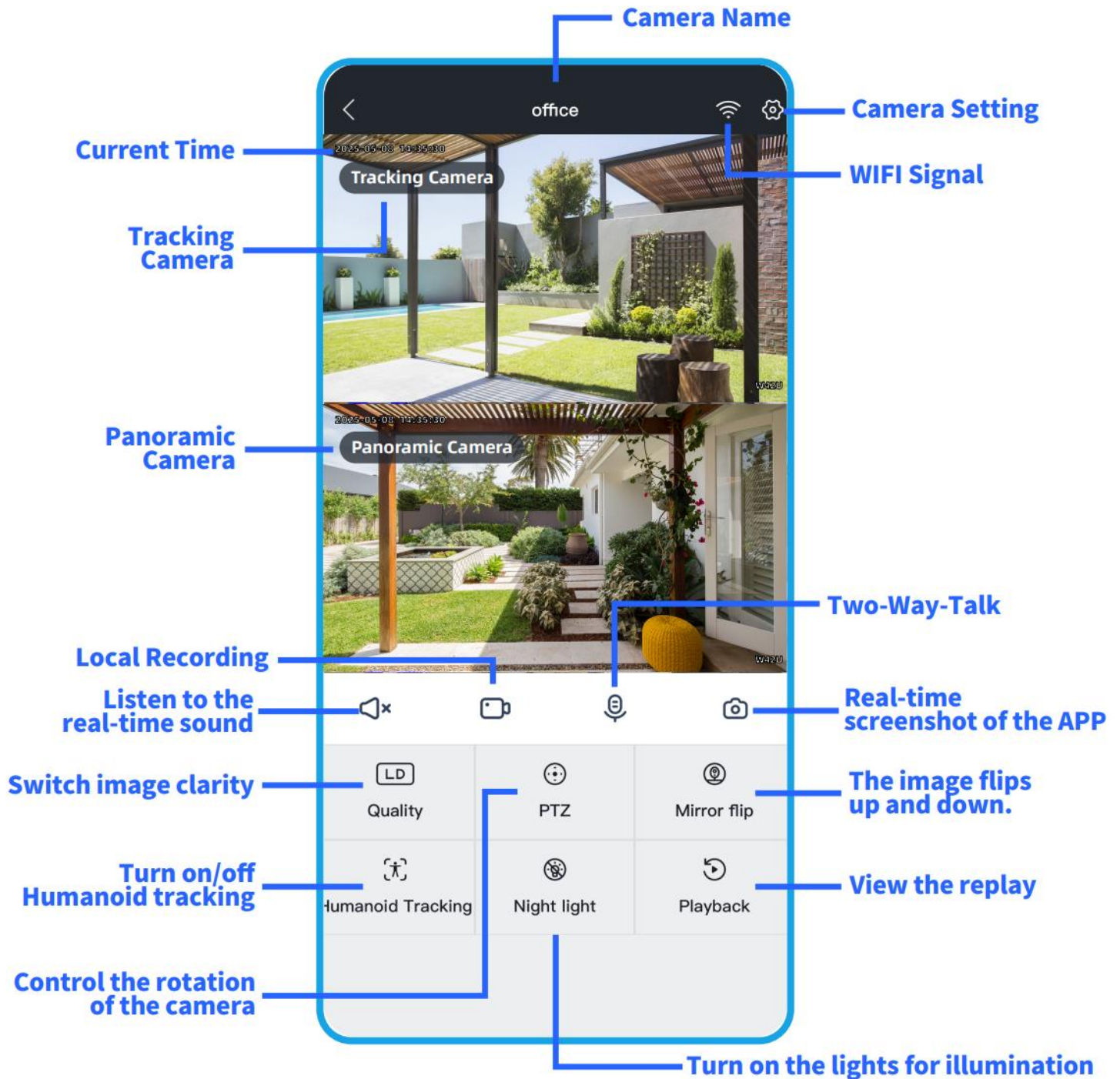
VII. Alarm Push

- 1、 After the device is added successfully, click "Alarm" and follow the prompts to operate.
- 2、 Alarm messages can be used to view videos and pictures, which are saved for 7 days by default.



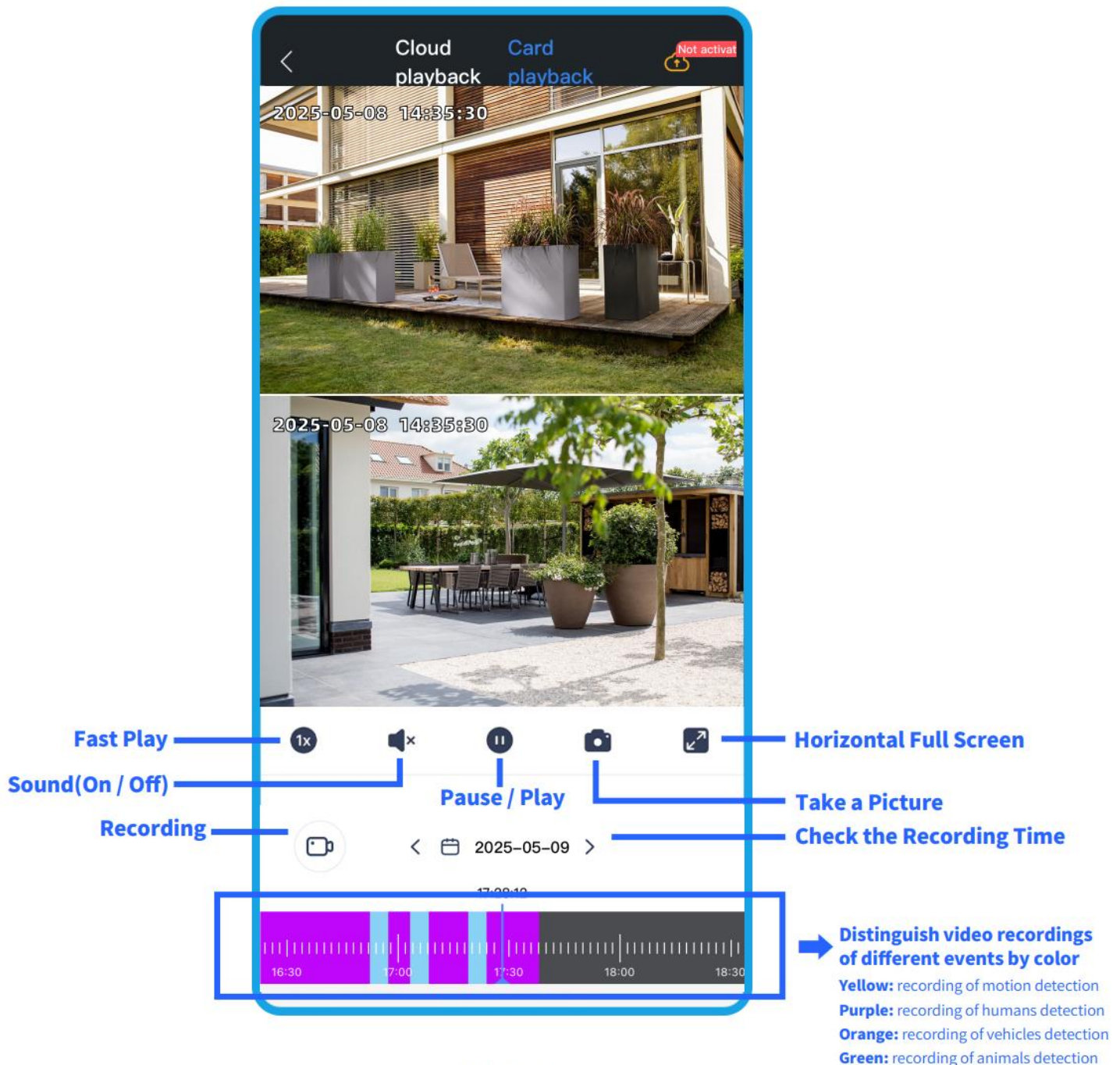
VIII. Live View

Click the preview window on the home page to enter the live view screen.



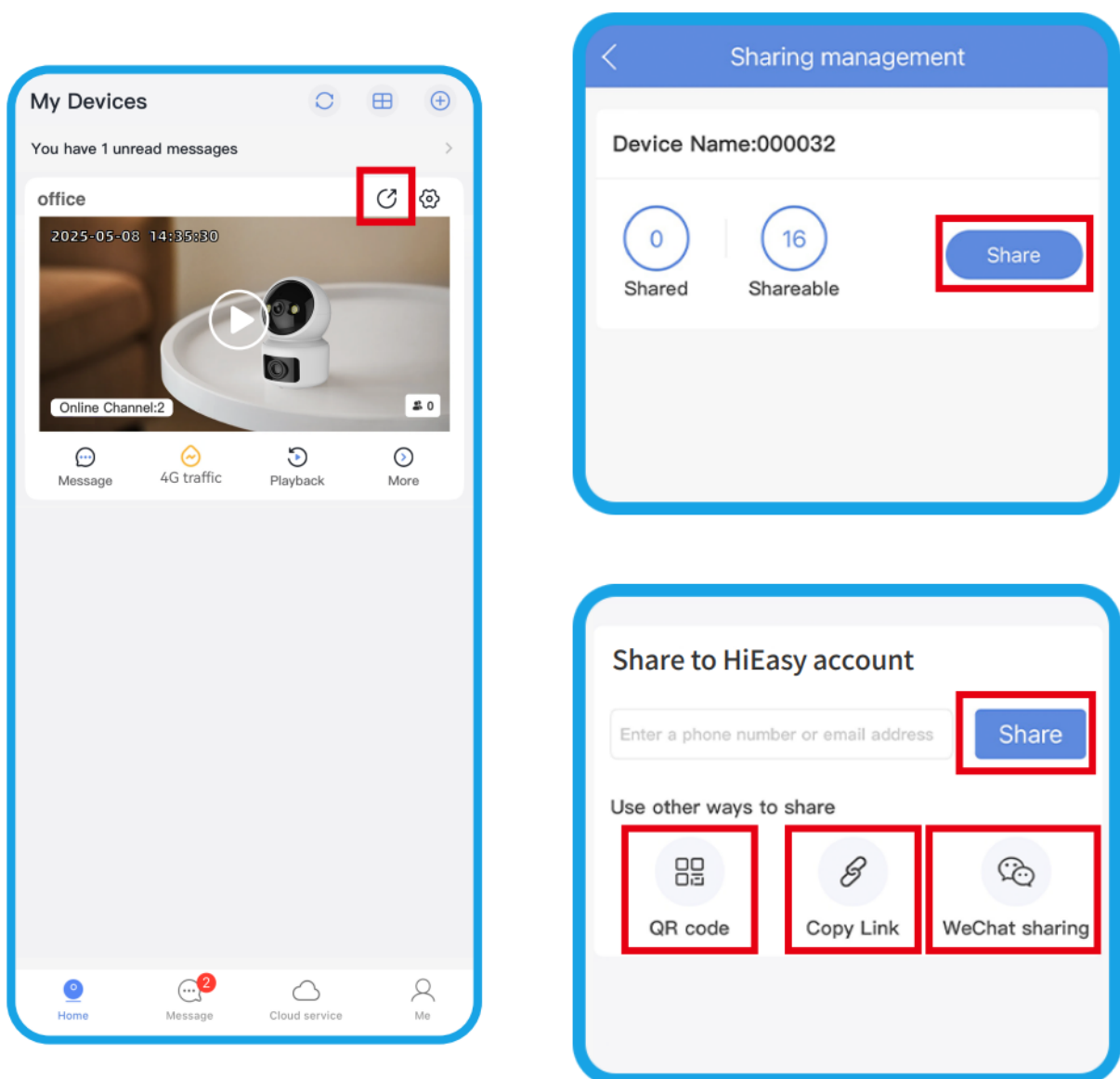
IX. View Playback

View recorded videos. Recordings can be retrieved from the TF card or cloud storage. Cloud storage can be purchased within the APP for more secure recording.



X. Sharing Function

- 1、 Click the share icon on the home page to share the camera with family and friends for viewing. (Requires account registration.)
- 2、 Enter the sharing settings to set sharing permissions, with multiple sharing methods available.



XI. Recording Storage

1、Continuous Recording:

24 - hour continuous recording throughout the day.

2、Alarm - Triggered Recording:

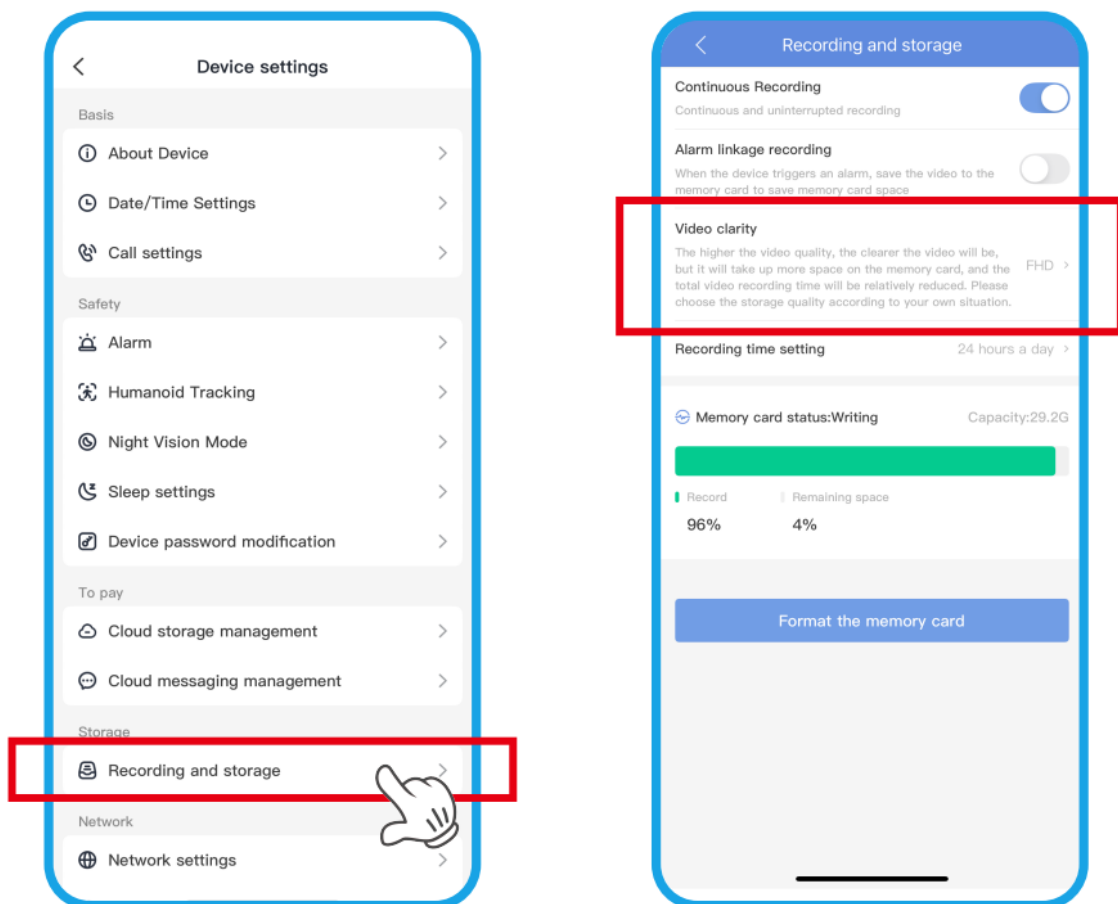
Records only after an alarm is triggered, which can save storage space on the memory card and make the recording last longer.

3、Video Clarity:

Higher clarity results in shorter video storage time.

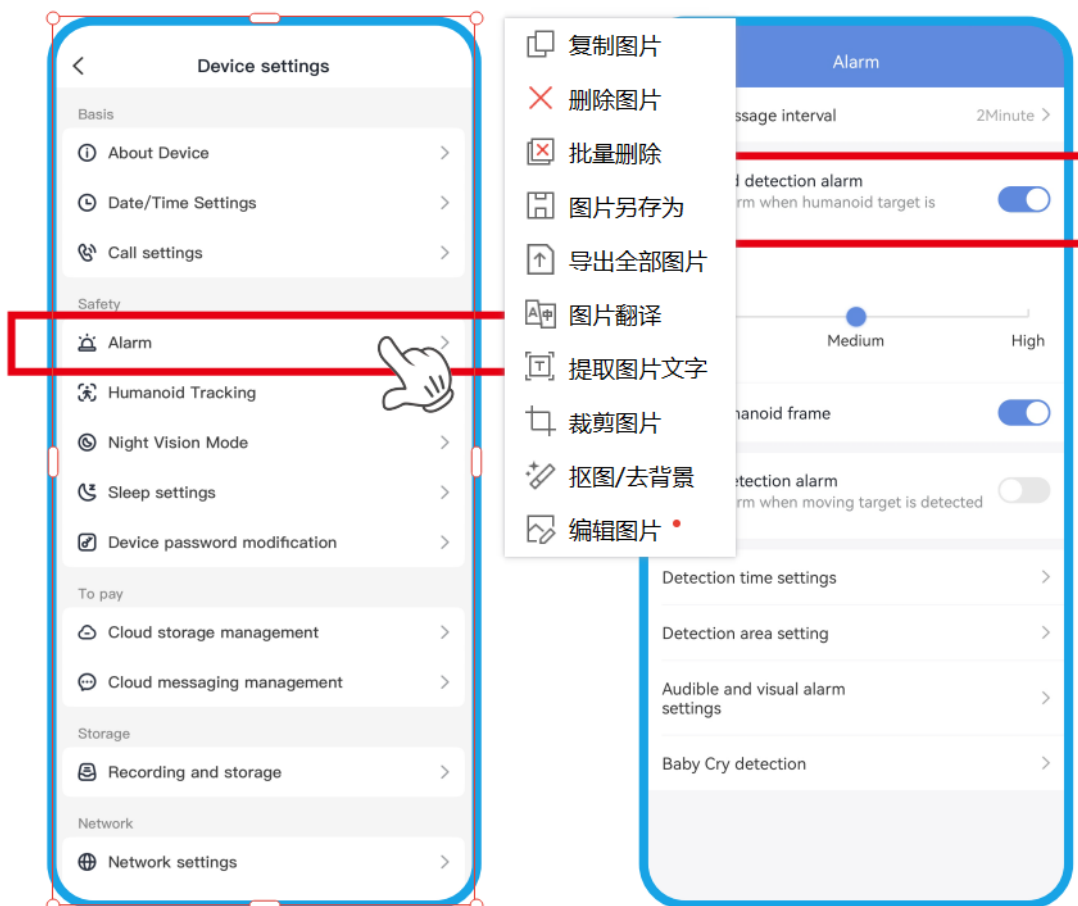
4、Formatting the Storage Card:

New cards need to be formatted before first use. Existing recordings will be cleared when formatting.



XII. Alarm Management

- 1、 Human - Shape Detection Alarm:** When turned off, it will not detect people entering and will not send alarm messages. High sensitivity detects at a longer distance, and low sensitivity reduces false alarms.
- 2、 Motion Detection Alarm:** Used to detect the movement of objects other than people. Off by default.
- 3、 Detection Area:** Set the area for human - shape detection.
- 4、 Sound and Light Alarm:** Set different alarm sounds and modes.
- 5、 Crying Detection:** Detects the crying of infants and toddlers to monitor the baby.



XIII. Night Vision Modes

1、 Smart Dual - Light:

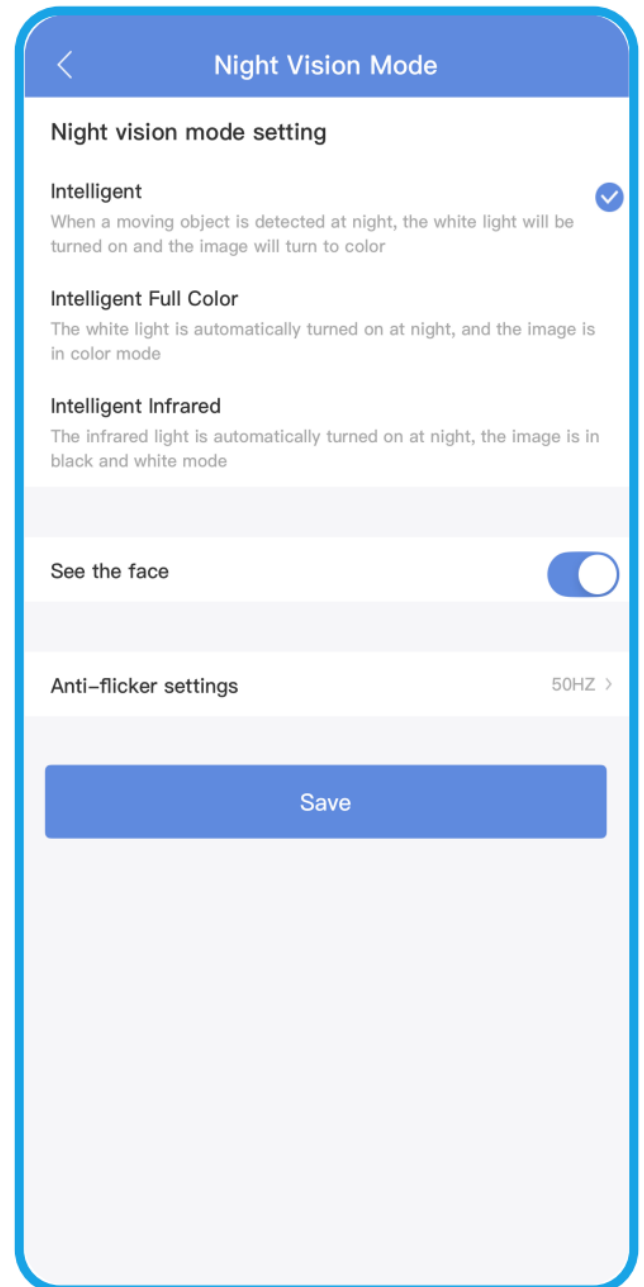
In night vision black - and - white mode, when a person is detected, the white - light floodlight turns on and the image becomes color. It reverts to black - and - white after the person leaves.

2、 Smart Full - Color:

In night vision color mode, the white - light floodlight turns on automatically.

3、 Smart Infrared:

In night vision black - and - white mode, the infrared fill - light turns on.



Frequently Asked Questions:

Please open the "Help" center in the APP. There are answers to common questions and video tutorials, which can easily solve your problems.

